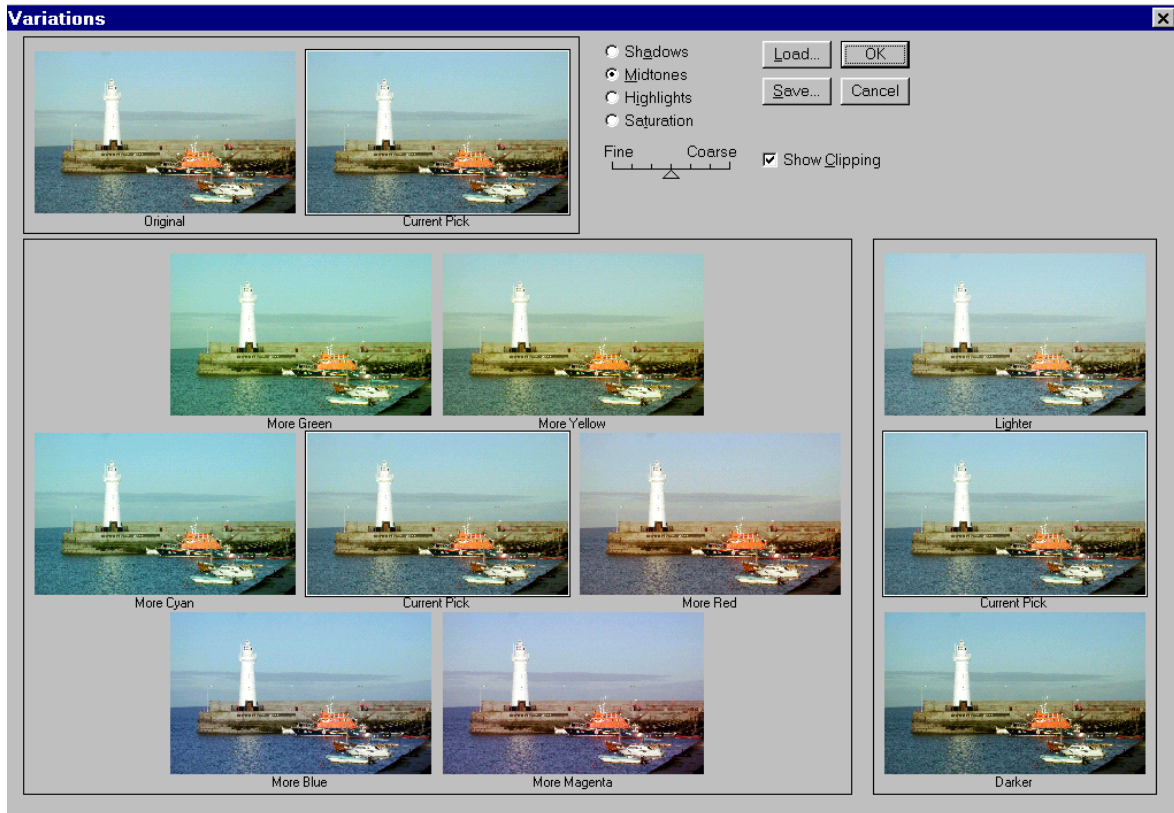


Photoshop 6

Color Control

1. Variations – select by image, adjust, variations

Selecting the color and whether lighter or darker which reflects the balance to be achieved the degree of adjustment can be controlled by the fine/coarse setting and the radio button within the image shadows, midtones, highlights or saturation



2. Color balance – select by image, adjust, color balance

The variations control provides an easier method of color balance however this control enables adjustment to be made between the colors on the sliders and also by selecting the radio buttons corresponding to shadows, midtones or highlights. Note! preserve luminosity should not be deselected

