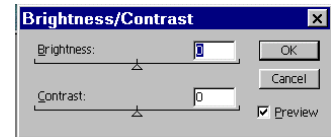


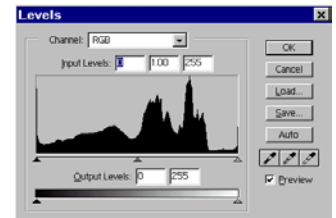
Photoshop 6

Tonal Control

1. Brightness & contrast - select by image, adjust, brightness/contrast
This control is very basic and levels is a much better control for the adjustment of brightness and contrast

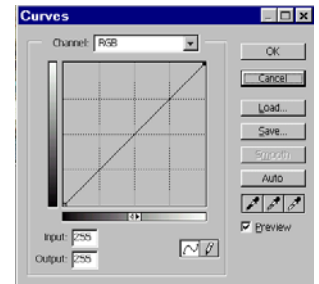


2. Levels – select by image, adjust, levels
In addition to a complete image adjustment, selective portions of an image can also be adjusted. The levels controls can also be used to adjust under and over exposure. The auto levels button enables the computer to adjust image levels and is best left alone



3. Auto levels & Auto contrast – select by image, adjust, auto levels or auto contrast
No dialog box appears for either of these controls and levels and contrast is best adjusted from within the levels control

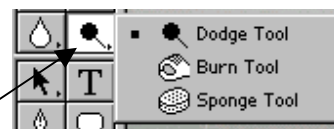
4. Curves – select by image, adjust, curves
In addition to a complete image adjustment, selective portions of an image can also be adjusted. The curves controls can also be used to adjust image contrast selectively for the rgb, red, green and blue channels. The auto levels button enables the computer to adjust image levels and is best left alone



5. Equalize – select by image, adjust, equalize
No dialog box appears for the equalize control and as for the auto controls adjustments this hands control over to the computer and is best left alone
6. Resetting any of the controls that are managed via a dialog box can be achieved by holding down the alt key which changes the cancel button and enables the reset command. The automatic adjustments of levels, curves and equalize can be undone by edit undo or control + z
7. Local dodging & burning
Local adjustment within an image can be achieved by the dodge, burn and sponge tools with adjustments to each tool being made via the options selections



Options selections



Dodge & burn tools