

Volume 1, Issue 2

June 2000



N E W S U P P D A T E F R O M

# Charlesberry Kennels

## Second Kennel Block Finished ahead of Easter 2000 break



Building works are going to schedule at Charlesberry Kennels. The second major 60' block has been finished before the Easter rush. The block will accommodate 11 large dogs and will boast exercise runs that are double the new area regulations -due for enforcement by the end of December 2000.

### SUMMER OPENING HOURS

Will commence from  
Sunday 26th March 2000

Monday-Saturdays  
9.00-6.00

Sundays  
10.00-4.30

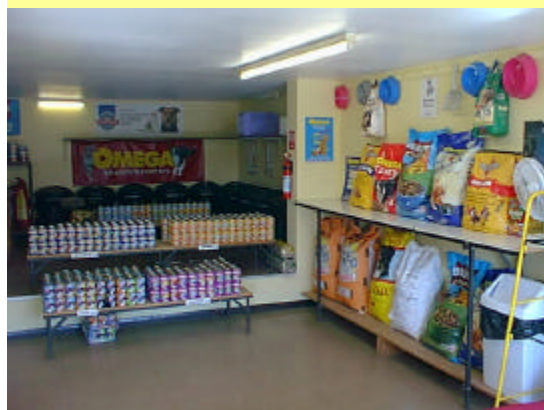
Bank Holidays as Sundays

The new cat houses are well under way. Single cat accommodation will change dramatically, each cat will have exercise runs that will be 18 sq.ft and sleeping accommodation of 9 sq.ft. They will also have outside verandas as in the past. Doubles sharing will have double the space and will enjoy 18 sq. ft. inside and 18 sq. ft. outside.

## Enough Room To Swing A Cat



## 90% Of Major Food Brands now Stocked



Animals diets are very important in Kennels. The slightest change to a diet can create upset stomachs, lots of mess and potential weight loss. In the un-usual event of us not stocking a particular diet we would ask you to provide it and we will reduce the daily rate accordingly.

### Find us on the web

From april 2000 we will  
Have our own website  
Log onto us at;

Telephone: 01908 611 289  
Facsimilie: 01908 61 2222  
Email: [charlesberry-kennels@uk2.net](mailto:charlesberry-kennels@uk2.net)