

EX45

Dome Cameras : Mono or Colour



EX45

The EX45 Hi-Impact dome is hammer tough, weather-tight and input power protected. For its exterior, there is a thick anodized CNC machined aluminium base, an impact resistant polycarbonate dome, and an anodized retaining ring that locks the dome in place while providing continuous rigidity against impact force

For its interior, Derwent has incorporated its voltage regulator board which allows 12V dc or 24V ac operation while providing protection from over voltages, transient spikes and unstable electrical supplies

EX45 is available with a wide selection of camera and lens options including both medium and high resolution monochrome and colour

Matching illuminator EX45LED available to provide effective 24 hour CCTV coverage



Applications:

- Industrial
- Schools
- Factories
- Residential
- Access Control
- Lifts
- Hospitals
- Prisons
- Offices

EX45 Range of Products: Camera and matching IR illuminator

**Hi Impact
Vandal Resistant
Dome**

To match hi-impact
IR illuminator:
EX45 LED

Flexible input voltages:
12vdc or 24vac

Wide selection of
camera and lens
combinations

Conduit mounting
options

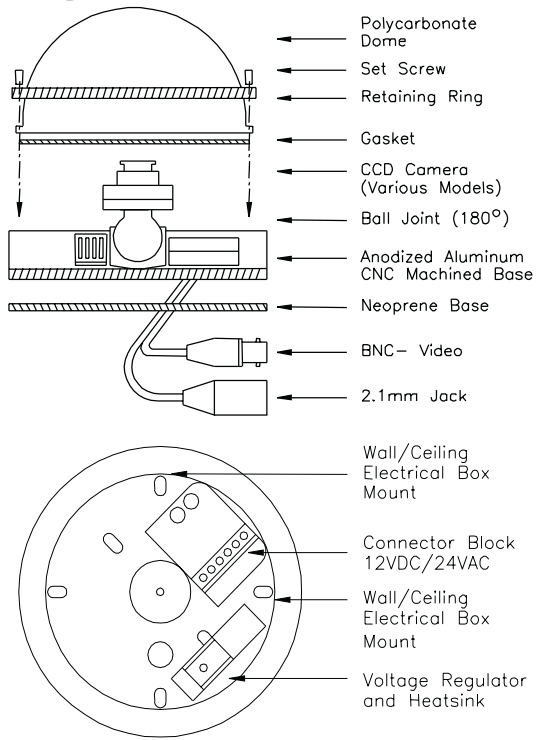
Low voltage

Rated for indoor
&
outdoor applications

Voltage regulator
board protects CCD
from surges/spikes

Derwent provide specialised
advice and support for
your night-time illumination
CCTV projects and can
arrange on-site
demonstrations

24 Hour CCTV
EX45

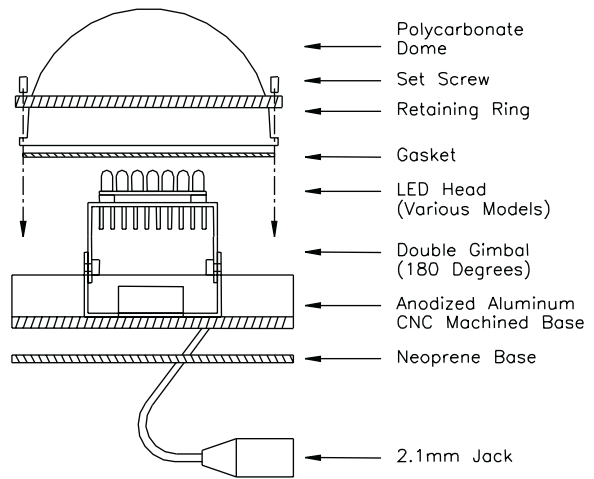


Camera Options

- S400** Monochrome, medium resolution
- S600** Monochrome, high resolution
- C400** Colour, medium resolution
- C600** Colour, high resolution

All the above cameras are available with a choice of 2.5mm, 3.8mm, 6mm, 8mm

Ultra long life
EX45LED



Illuminator Specification



LED Type	High Performance 850nm or 940nm
Number of LEDs	42
Consumption	600 mA(max)
Power Supply	12 VDC or 24VAC
Operational Range	-20°C to 50°C

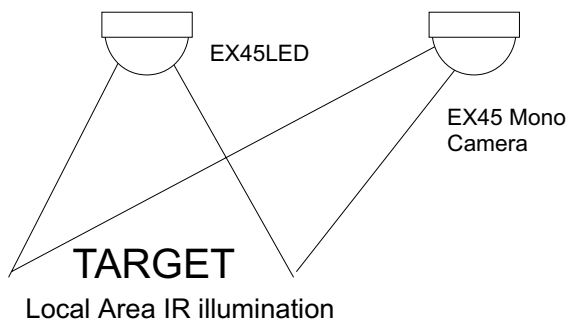
Note on LED lamp

LED's (light emitting diodes) are long life devices when used within their specifications.

LED's are intrinsically low power devices and LED lamps are designed for short range applications. Reliability of LED's is dependant on temperature of operation and maximum ventilation should be allowed

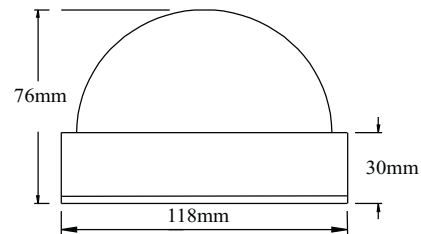
Beam Patterns

Angle 50° - Wide



Enclosure

Dome	Polycarbonate
Base / Ring	CNC Aluminium Anodized (6061 T6)
Dimensions	118mm dia / 83mm H
Weight	454g



Note: Range, video signal, signal/noise ratio and field of view will depend on sensitivity and spectral response of camera/lens combination. **Contact Derwent for advice on your proposed scheme**

Europe:
Derwent Systems Limited
Derwent House, Colbourne Crescent,
Nelson Park, Cramlington, Northumberland, NE23 1WB
England
Tel: +44 (0) 1670 730187
Fax: +44 (0) 1670 730188

North America
Derwent Extreme Technologies Inc.
4060 McConnell Drive
BC V5A 3A8
Canada
Tel: +001 604 533 6644
Fax: +001 604 533 7800

The performance figures given are typical. In view of company policy of continuous product development the specifications may be changed without notice.
Version 2.0