

That's Me!

THAT'S ME - THE OFFICIAL JOURNAL OF THE LOUGHTON MOUNTAINEERING CLUB

SPRING 2003

Costa Notta Lotta Blanca.

Chris, Esther, Jeff and Mike Pinney (a friend from Yeovil, companion on many Alpine epics, and a far too sober and serious climber to consider joining LMC!!) spent a pleasant week in early December based in Benidorm on the Costa Blanca. The weather was very sunny and on occasions warm enough to sunbathe, whoops, I mean climb in shorts! But on some days a cold wind blew, encouraging us to try some of the excellent hillwalking in the region, rather than rock climbing.

We had five days climbing, mainly on bolted 'sport routes', at Sella, Toix and on the Penon d'Ifach, a spectacular miniature version of the Rock of Gibraltar rising over 1,000ft straight out of the sea. On the windy days we did a scrambly walk on the famous Bernia ridge, Spain's

answer to the Cuillins without the rain and made an ascent of Puig Camapana the 'Matterhorn' of the Costa Blanca. Both excellent outings with superb views.

The accommodation was on the 26th floor of an apartment block with views out to the Med in the east, across the whole of Benidorm to the south which at night was lit up like Las Vegas and in the west the conical bulk of Puig Campana. Even for us hardened mountaineers the exposure on the balcony with its flimsy glass front was intimidating, we would have felt happier roped up!

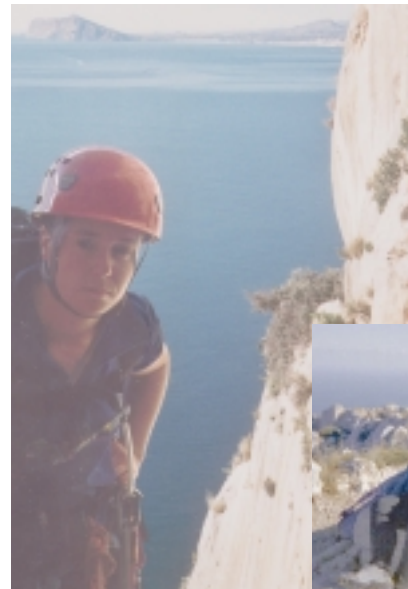
In the evenings we managed to avoid the excesses of the infamous Mallorca trip of 2001, only venturing out twice to check out the tackiness of Benidorm's 'English' quarter. Jeff's usual nose for

a good bottle of cheap supermarket white wine deserted him and on most evenings he was forced to finish a bottle of some truly disgusting plonk on his own, while Mike and Esther

opted for the safety of beer!

An excellent break from the grey English winter, many thanks to Chris for organising the trip.

(Costa Notta Lotta ? £238 each for 7 nights including flights, parking, accommodation, car hire, petrol, food and wine/ beer.)



Left: Estha on the Penon d'Ifach.

Below: Mike, Esther and Chris on the summit of Puig Campana.



Lords Rakes rock fall warning

There is a toppled block at the top of Lords Rake - this block has recently fallen across the route and is fractured and extremely loose.

Dislodged rocks beneath it will bring it down, cleaning out the rake (and anyone in it) and sending boulders crashing down to the tourist path which leads from Hollowstones to Mickledore.

WASDALE Mountain Rescue team are warning of the massive rock fall on Scafell, making conditions very dangerous.

Lord's rake approached from Mickledore Ridge or Hollowstones, on the Wasdale side, is an accident Blackspot.

Last year the pillar collapsed, making the situation dangerous and prompting the National Trust to place warning signs around the area about loose

and unstable rock.

Now a wall to the left of the detached block has collapsed, making the

situation even more dangerous. As a result, a lot of rock has been left at the top, ready to fall down, and



Photo taken from start of the Rake looking west.

The toppled block at the top of the first ascent is a recent feature.

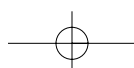
the pile is very loose and unstable. It has also caused the leaning block from the last fall to drop a further few feet into the rake and has now cracked at its base.

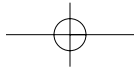
Mountain Rescue are warning people to exercise extreme caution if they are going to attempt the route.

Frozen ground has stabilised the rake below the pillar but the block itself and surrounding rock walls are highly suspect.

The considered personal opinions of two Mountain Rescue team members, one a qualified Geologist, the other a Chartered Civil/Structural Engineer is that the pillar will not survive any further movement and its collapse is imminent. The rock wall to the left of the photo is also severely fractured and ready to come down.

If you do venture up the rake and notice any further movement please contact the team or the National Trust.





	L	R
A		
B		
C		
D		
E		
F		
G		



Know your left from your right and win a years free membership to the LMC*, match the legs to the walker and gain points . . . and what do points mean? . . . prizes!!!

* Only valid for the year 2010

Meets again...

Christmas meet saw a lower attendance than usual, the weather was a little dismal, but a festive time was had by all. A grand job carried out by Ian and co Sunday morning clearing all the evidence of party poppers, bottles and cracker fillings away. Did Glen and Jeff really get us abseiling down the banister?

I think we broke the record for longest lie in Sunday morning, everyone surfacing about midday! Bad!

Thanks must go to Glen and Jeff for doing the biz and cooking a great Christmas Dinner, especially Glen who floated up to an early bed on a cloud of his own brought on by the smell of the cooking sherry!

We did do some walking.. Saturday a group headed for Nantle Ridge. It seemed a good climb, but alas will have to be added to the endless 'redo on a sunny day walk'. I'm sure the views were lovely beyond the endless mist and clouds. Sunday was unfortunately another dismal day, so the energetic headed to the Beacon wall and the lazy, the all important shops for that extra kit that do we really need?

January saw us celebrating 'Happy Haggis'...the

weekend falling on Burns night.

A new year and New Years resolutions!! – we WILL be out of our pits by 7.30!!! Ian designated – chief Tea maker and Harry as deputy and Leigh – supervisor! (from her sleeping bag!)

The day saw the lazy group head for Anglesey, who shall remain nameless.. (well, it was rather windy & cold), a car tour with beach walk seemed an excellent option! Others headed for Elidir Fawr, Foel-goch and Carnedd y Filiast – with a tour of the quarry maze being the highlight so I'm told!!!

Ramsay excelled his cooking talents with a traditional Scottish feast making us all turn vegetarian for the night (unbeknown – shock to us) He addressed the Haggis in True Scots Ice Axe style (needs to work on the sexy Sean Connery accent tho).... Music was provided by Ian and Leigh, mandolins and fiddle.... and the whiskey bottles were emptying fast.. So much so that we never even made it to the pub!!! (sorry Tony)

The tables were cleared and with the CDs back on, Kate showed her hidden talents for table dancing - and with a pole too!!!! Say no more!

February, we're back at good old George Starkey hut.... And wow, actually some fantastic weather on the Saturday! A frozen Red Tarn and snow scattered tops!

The new years resolutions are going well... Harry, up eagerly looking out the window and Ian making the Tea.

Where shall we go?... well, how about Helvellyn? A very sociable weekend, we all set out together heading for Striding Edge. Harry and Leigh group split and headed to Catsycam and Swirrel, with the others staying on the ridge.

A not so good event was witnessed with another group party member falling and breaking his leg. Peter Deeks, joined them and took control with bringing the party member back to safe ground to await the mountain rescue, which apparently took about four hours – a good lesson to us all to always be prepared! We ended the day in the pub at Glenridding to watch the rugby, before tea and then the pub in Patterdale.

Sunday was a bit lazy, with trips to Angle Tarn, but Helen and Harry headed for High Street while others relaxed in front of the fire. A welcome too to Jules, for her first LMC meet.... *Reports by LS*

STOP PRESS:

What members have been up to...or will be
 Congratulations to Jules for completing a 10KM run on 30th March in aid of St Clares hospice. She's been training hard the last few months and did a very good time.

You may see Harry and Leigh this year studying hard (rather than drinking in the pub) and playing with compasses rather a lot.. they are doing the Mountain Leader Training course which runs over three weekends this year.

Peter Deeks will be leading a group of school children to Costa Rica in July as a World Challenge Leader... Good luck Peter, and have a great time, we'll miss you at the July and August meets!



The Loughton Mountaineering Club can be contacted at:
www.lmc.freewire.co.uk

Articles for publication can be sent to:
 The Editors,
 55 York Hill, Loughton,
 Essex IG10 1HZ
 or by e-mail – see LMC website.

